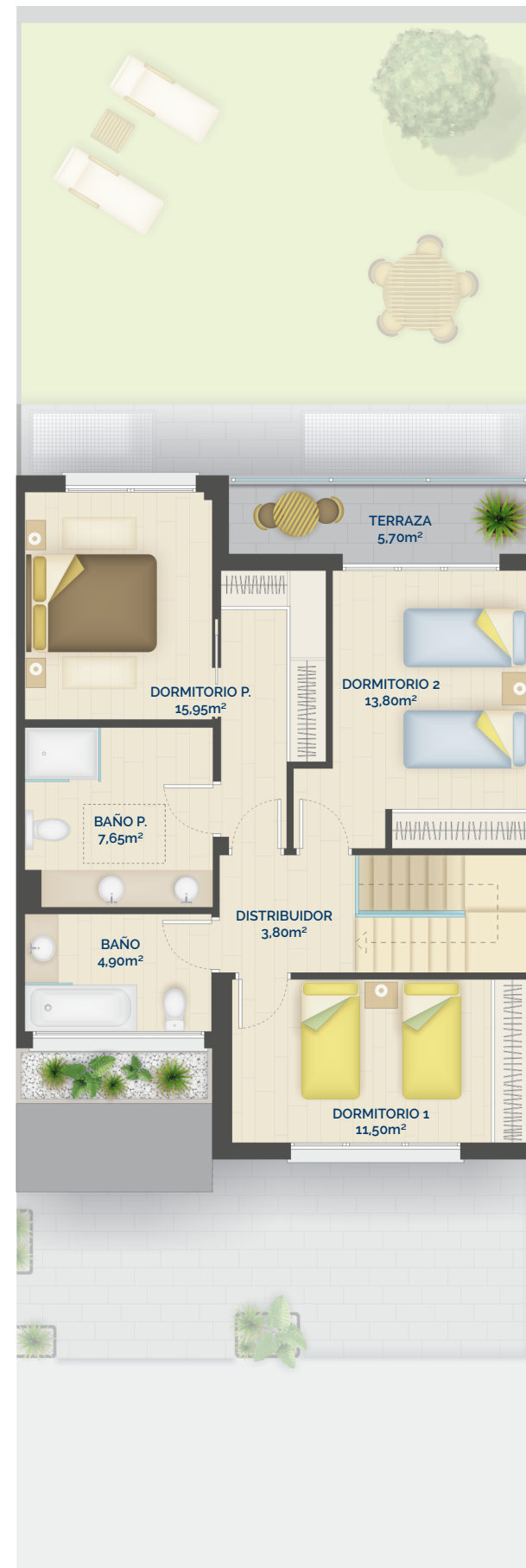
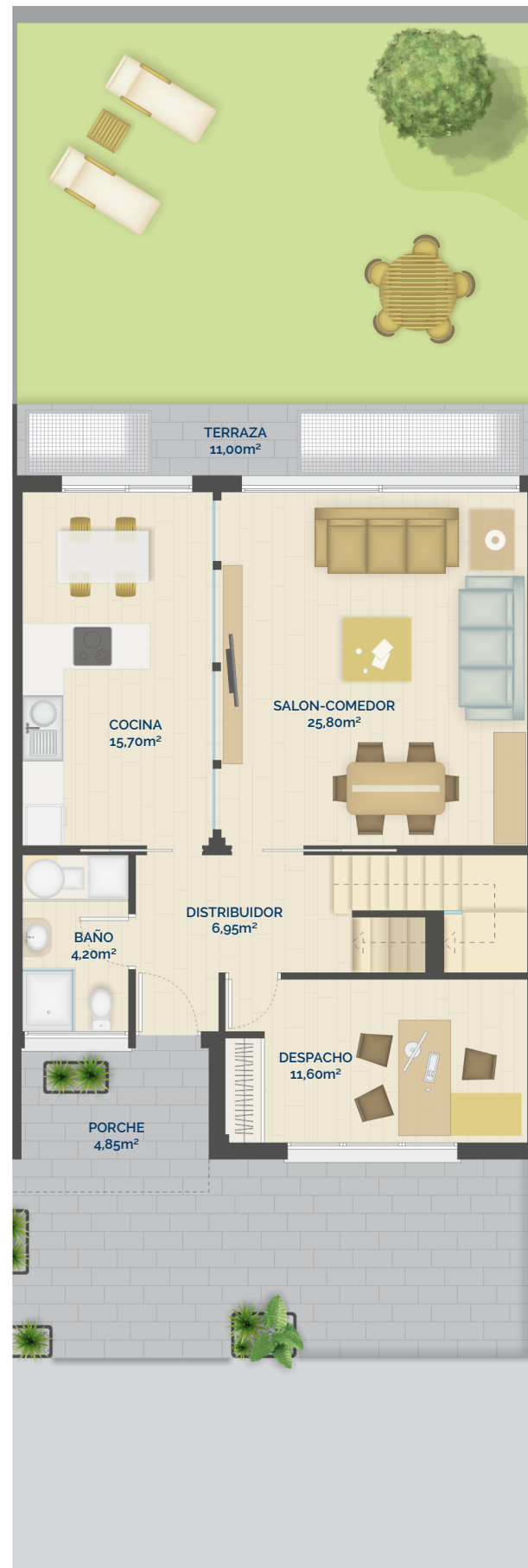
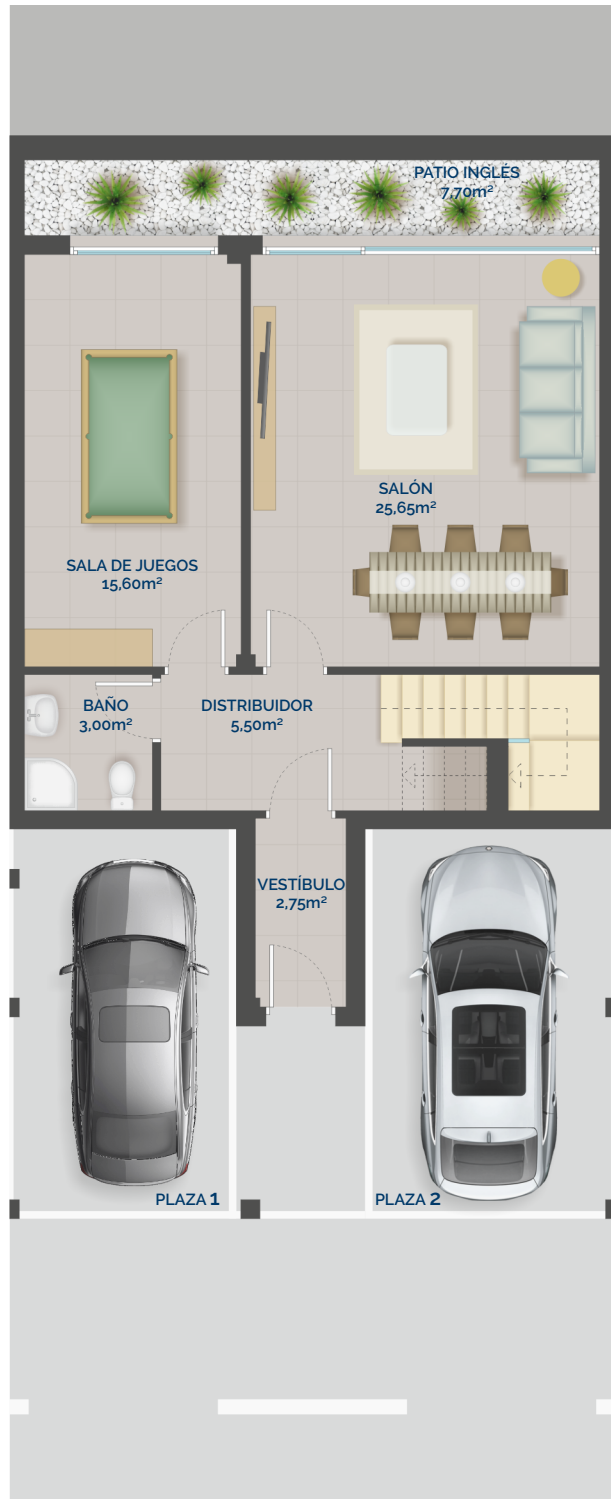


TIPO A
 VIVIENDAS ADOSADAS 2, 15, 20, 22 y 23
CUADRO DE SUPERFICIES



SUPERFICIES CONSTRUIDAS	
P. SÓTANO	116,70m ²
P. BAJA	*82,50m ²
P. PRIMERA	73,95m ²
TOTAL	273,15m²

SUPERFICIES ÚTILES	
P. SÓTANO	102,20m ²
P. BAJA	69,30m ²
P. PRIMERA	62,40m ²
TOTAL	233,90m²

TERRAZAS	
P. BAJA TERRAZA FRONTAL	**27,05m ²
P. BAJA TERRAZA POSTERIOR	*11,00m ²
P. PRIMERA TERRAZA	5,70m ²
TOTAL	43,75m²

SUP. CONSTRUIDA+TERRAZAS	
TOTAL	316,90m²
SUP. UTIL+TERRAZAS	
TOTAL	277,65m²

SUPERFICIE ZONA COMÚN	3,050m²
------------------------------	---------------------------

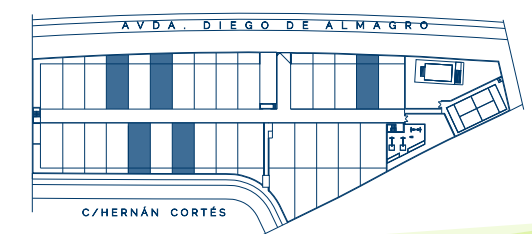
SUP. TOTAL PARCELA 2	SUP. JARDÍN (TIERRA)	*41,45m ²
	SUP. TOTAL PATIO	52,45m ²
	SUP. PARCELA PRIVADA*	**134,95m ²
	SUP. PARCELA TOTAL**	162,00m²

SUP. TOTAL PARCELA 15	SUP. JARDÍN (TIERRA)	*45,00m ²
	SUP. TOTAL PATIO	56,00m ²
	SUP. PARCELA PRIVADA*	**138,95m ²
	SUP. PARCELA TOTAL**	165,55m²

SUP. TOTAL PARCELA 20	SUP. JARDÍN (TIERRA)	*31,45m ²
	SUP. TOTAL PATIO	42,45m ²
	SUP. PARCELA PRIVADA*	**124,95m ²
	SUP. PARCELA TOTAL**	152,00m²

SUP. TOTAL PARCELA 22	SUP. JARDÍN (TIERRA)	*31,10m ²
	SUP. TOTAL PATIO	42,10m ²
	SUP. PARCELA PRIVADA*	**124,80m ²
	SUP. PARCELA TOTAL**	151,65m²

SUP. TOTAL PARCELA 23	SUP. JARDÍN (TIERRA)	*41,15m ²
	SUP. TOTAL PATIO	52,15m ²
	SUP. PARCELA PRIVADA*	**134,65m ²
	SUP. PARCELA TOTAL**	161,70m²



PLANO DE EMPLAZAMIENTO